



Development Forum

Shinfield Parish and South of M4 Strategic Development location

Monday 14th October 2019

Working together: Shinfield Community Centre

Planning application: 191387 : **Permission granted September 2019**



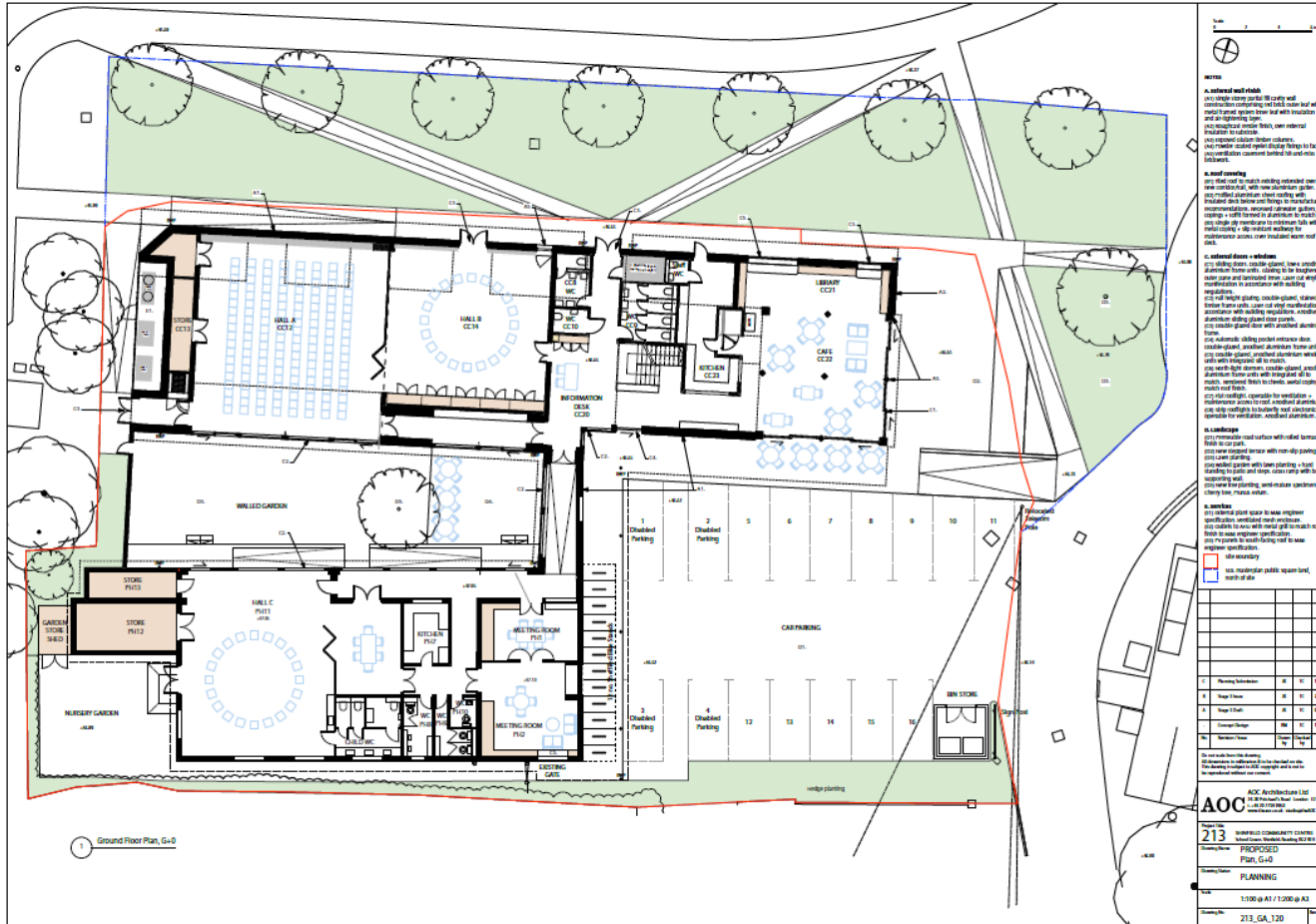
AOC
architecture



The cafe



Internal Layout plan



Taking the roof off and looking inside



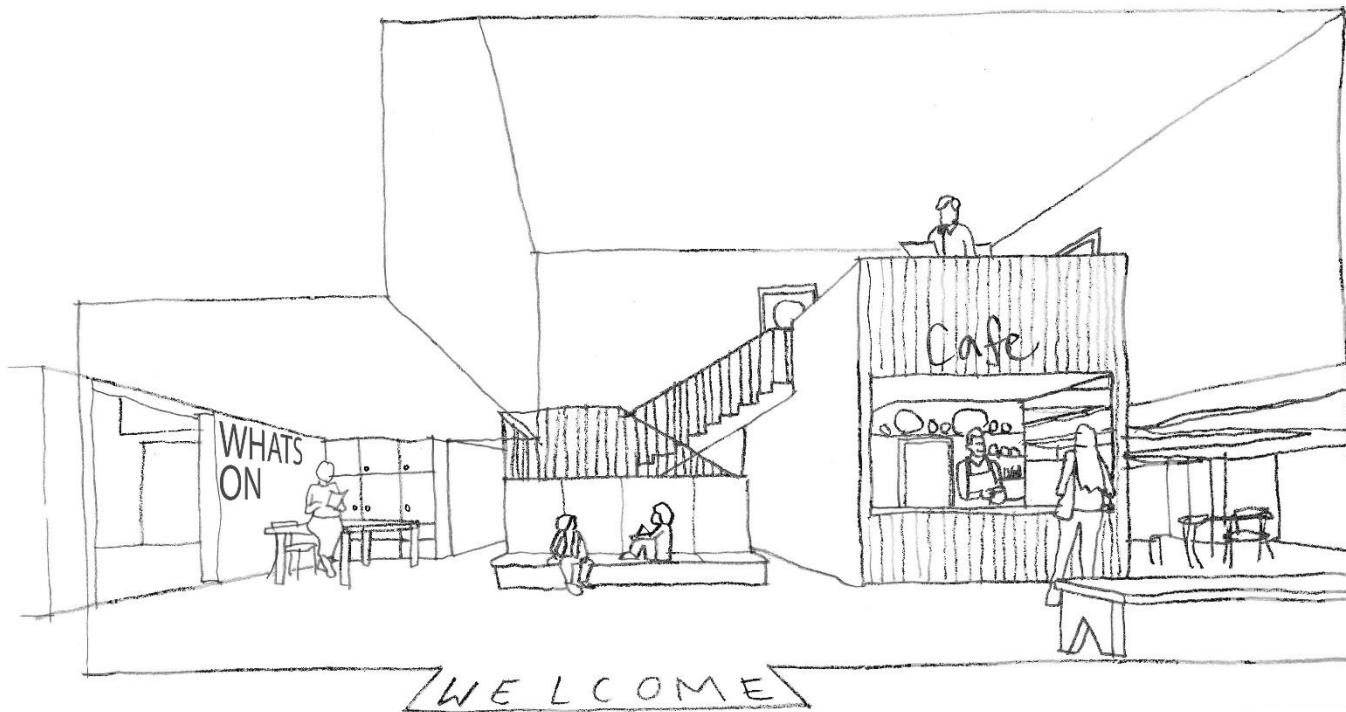
Shinfield Community Centre

- Redeveloping the Royal British Legion site
- Remodelling Shinfield Parish Hall
- Corridor link between the two buildings
- Enclosed garden
- 2 new halls with moveable divider
- Remodelled hall in Parish Hall*
- Toilets for small children*
- New SPC offices
- Council Chamber/ large meeting room
- Café
- Library
- 1 Breakout space
- Club meeting rooms with storage

Construction STARTS in 2020 and fully OPEN in 2021

* For Red Kite services and bookable by the public

The entrance



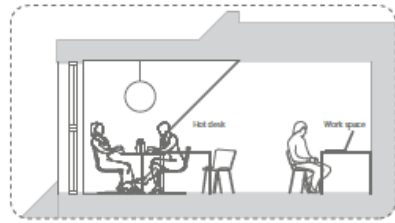
Library and cafe



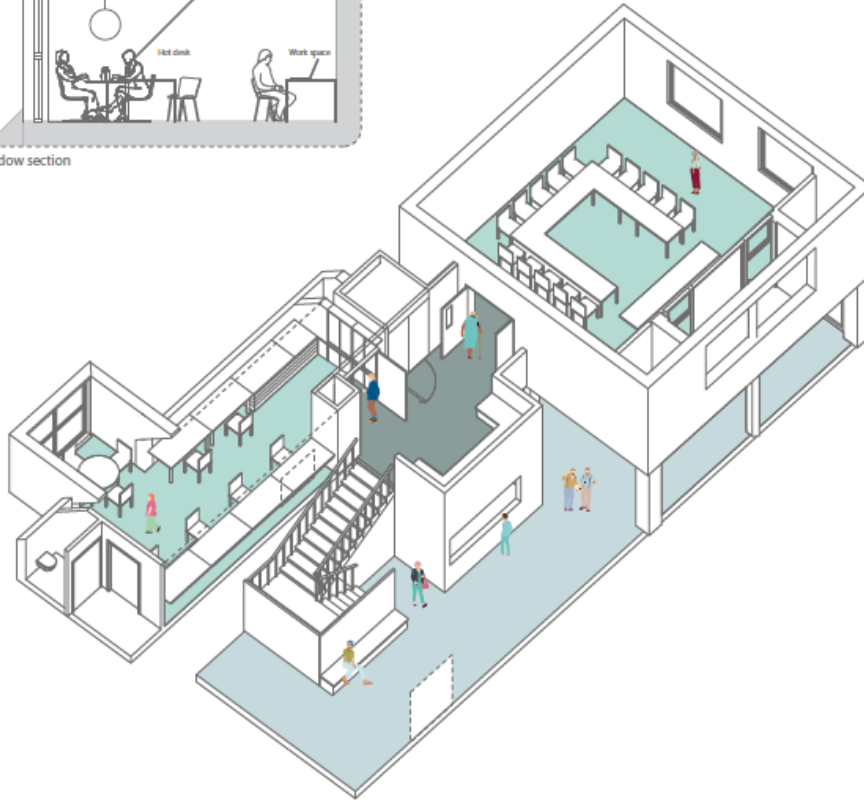
The new halls opened up as one area



The meeting rooms



Window section



Parish Council Suite

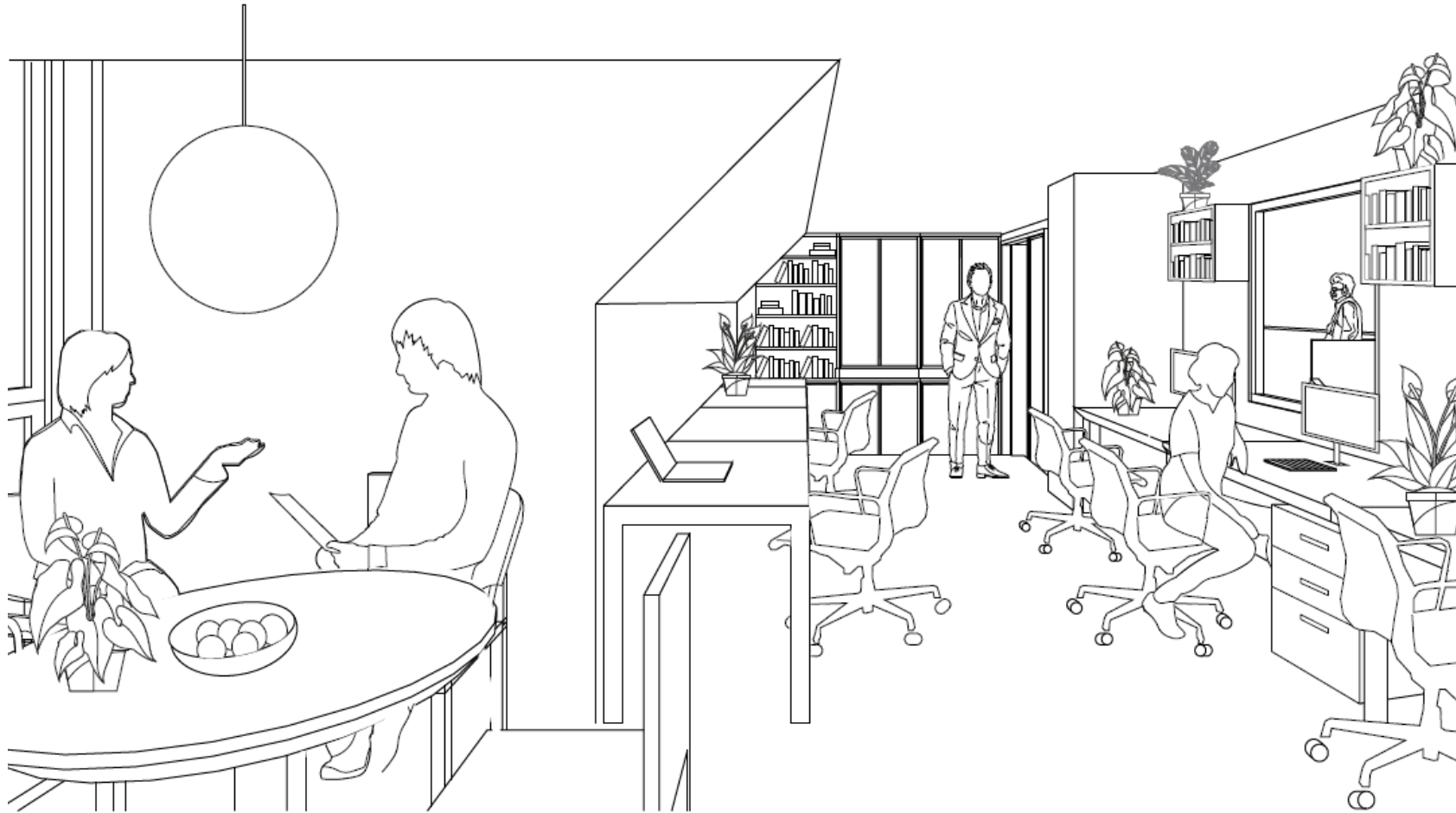


Club rooms

The Council Chamber



Offices



Improving Shinfield Parish and the South of M4 Strategic Development Location

Developing the Parish:

- Replaced all 115 SPC owned street lamps with LEDs saving £7000 per annum
Part of a Wokingham BC delivered programme
- Replacing Spencers Wood Pavilion: 2021/22
- Improving Millworth lane facilities: 2020

Improving Shinfield Parish and the South of M4 Strategic Development Location

Improving connectivity:

- Reading Green Park Station

Permission granted, work started:

OPENS LATE 2020

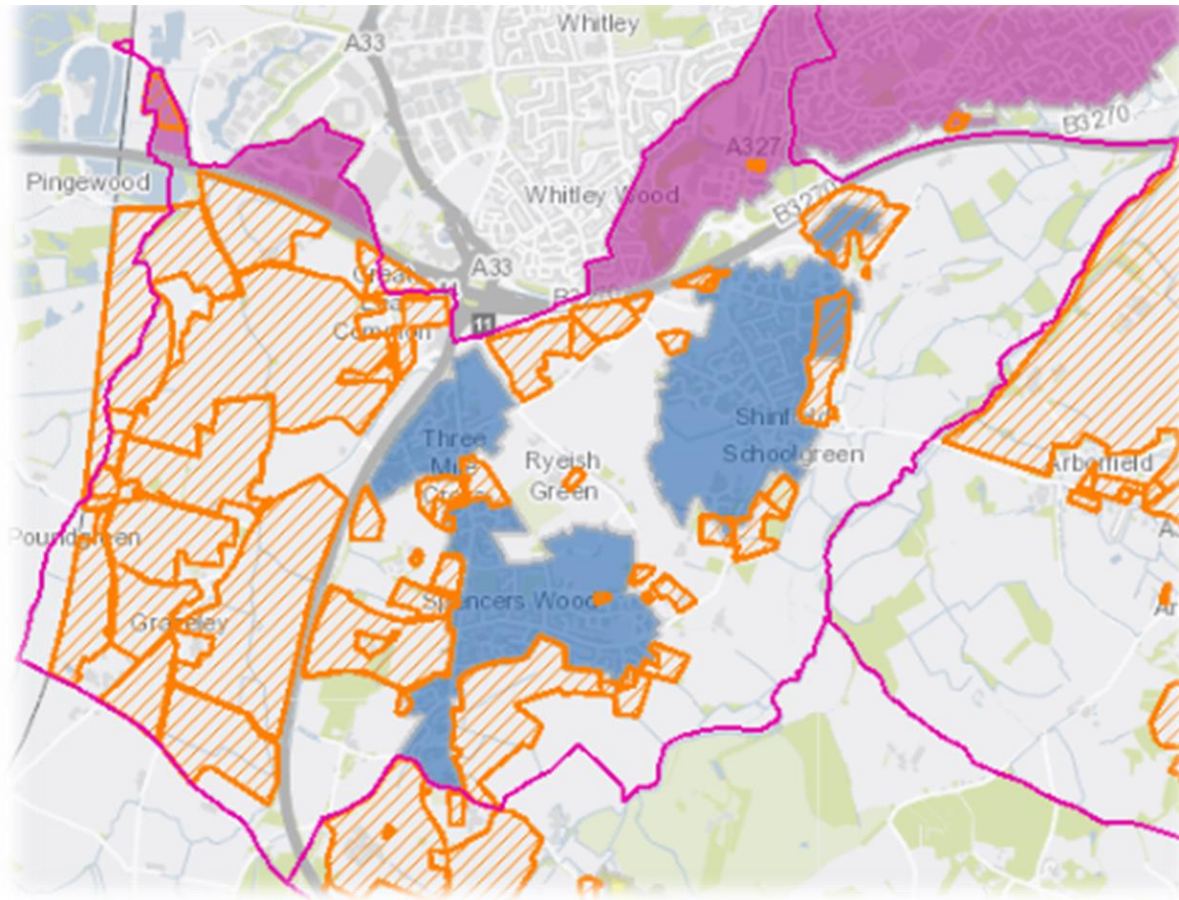
Did you know 50% of the station is in Shinfield Parish?

- Remember Mere Oak Park and Ride

Buses to Reading/Coaches to Heathrow and Gatwick

- Give us your views on widening Hyde End Rd

Working to manage development up to 2036



- CEMEX application rejected: Expect an appeal
- Cutbush Lane: Appeal lodged
- Monitoring Grazeley Garden Community proposition



- ▶ Chair: Andrew Grimes
- ▶ Vice Chairs: Darrell Lias, Laurie James
- ▶ Chair of Planning Committee: Dawn Peer

- ▶ Contact us at: clerk@shinfieldparish.gov.uk

Come and help Shinfield Parish Council make this a great place to live and work.