



Development Forum

Shinfield Parish and South of M4 Strategic Development location

Wednesday 17th July 2019

Working together: Shinfield Community Centre

Planning application: 191387 - Decision due August 2019



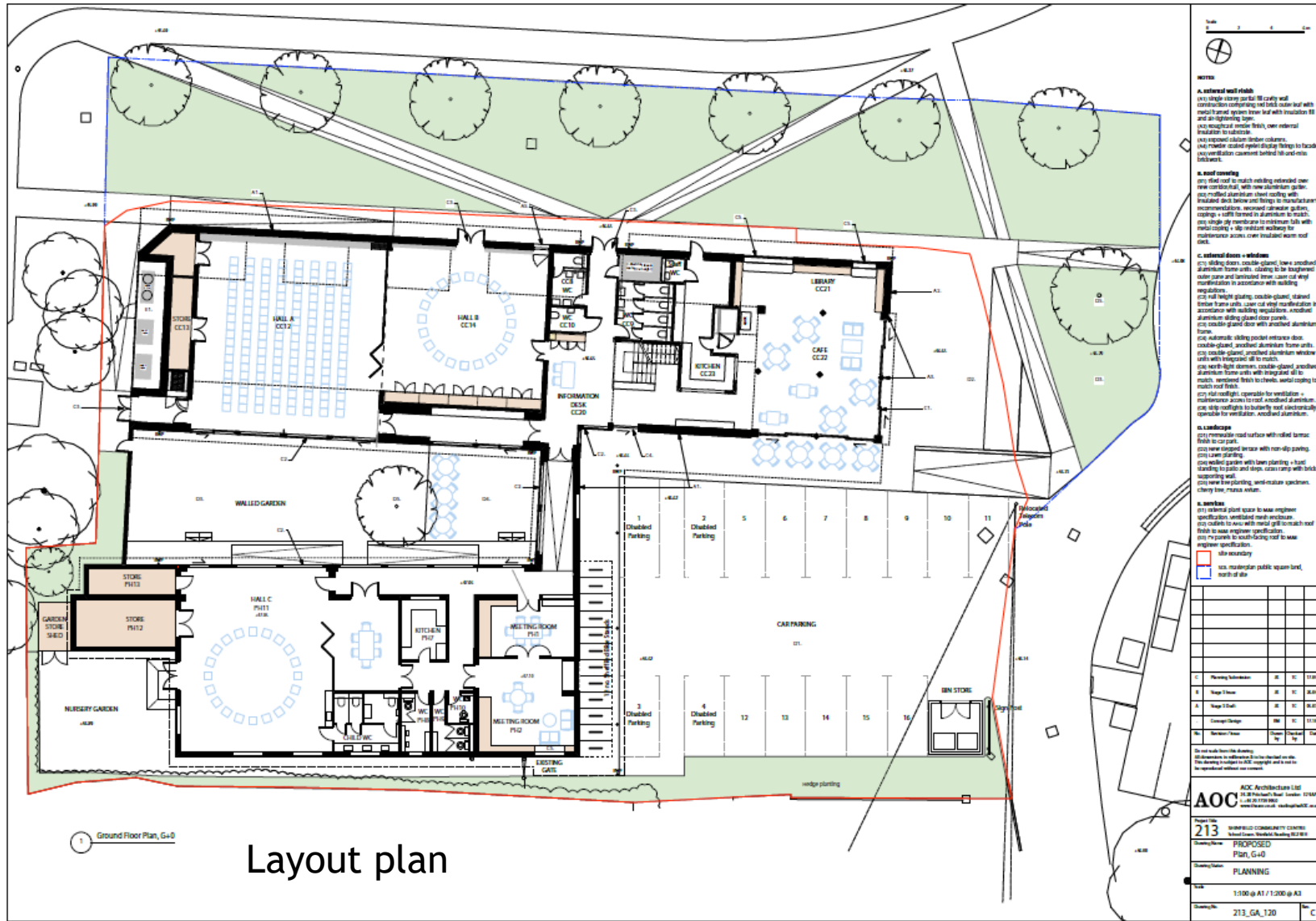
SPC:17/07/2019

AOC
architecture

locality
the power of community

SP
Shinfield
Parish Council


WOKINGHAM
BOROUGH COUNCIL



Improving Shinfield Parish and the South of M4 Strategic Development Location-1

Developing the Parish:

- Replacing Spencers Wood Pavilion
- Funding Grazeley Village Hall improvements
- New allotments
- Exchanging land to create open spaces

New Sports facilities:

- The Manor
- High Copse Farm
- Improving Millworth Lane facilities

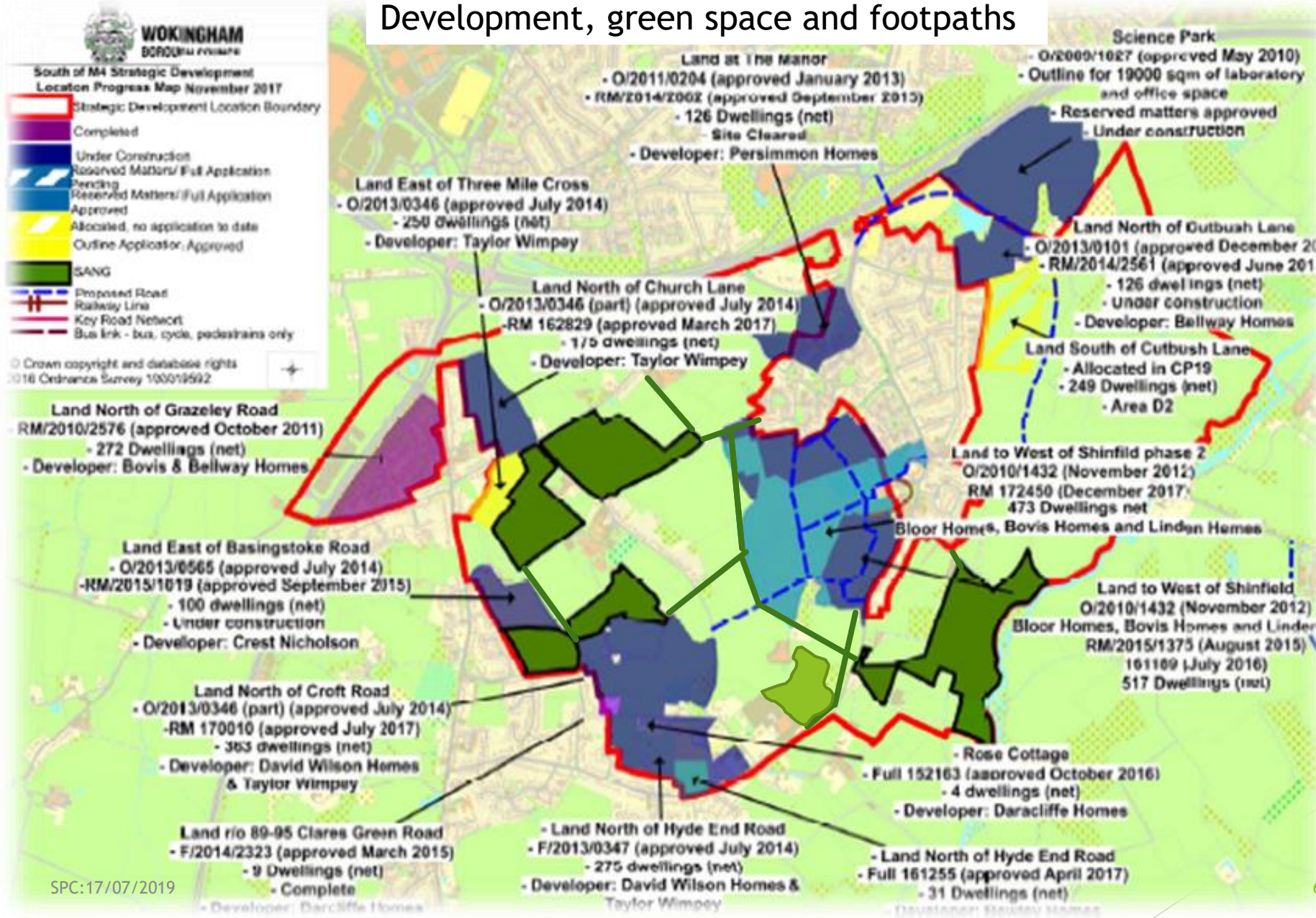
Supporting great teams

Improving Shinfield Parish and the South of M4 Strategic Development Location-2

Improving lifestyles:

- A network of new footpaths
 - Why drive when you can walk?
- Developing new walking leaflets
- Making our greenspace accessible
- Neighbourhood Park
- 30 mph speed limit campaign
- Air quality monitoring to establish baseline data
- Pride in the Parish

Development, green space and footpaths



Improving Shinfield Parish and the South of M4 Strategic Development Location-3

Improving connectivity:

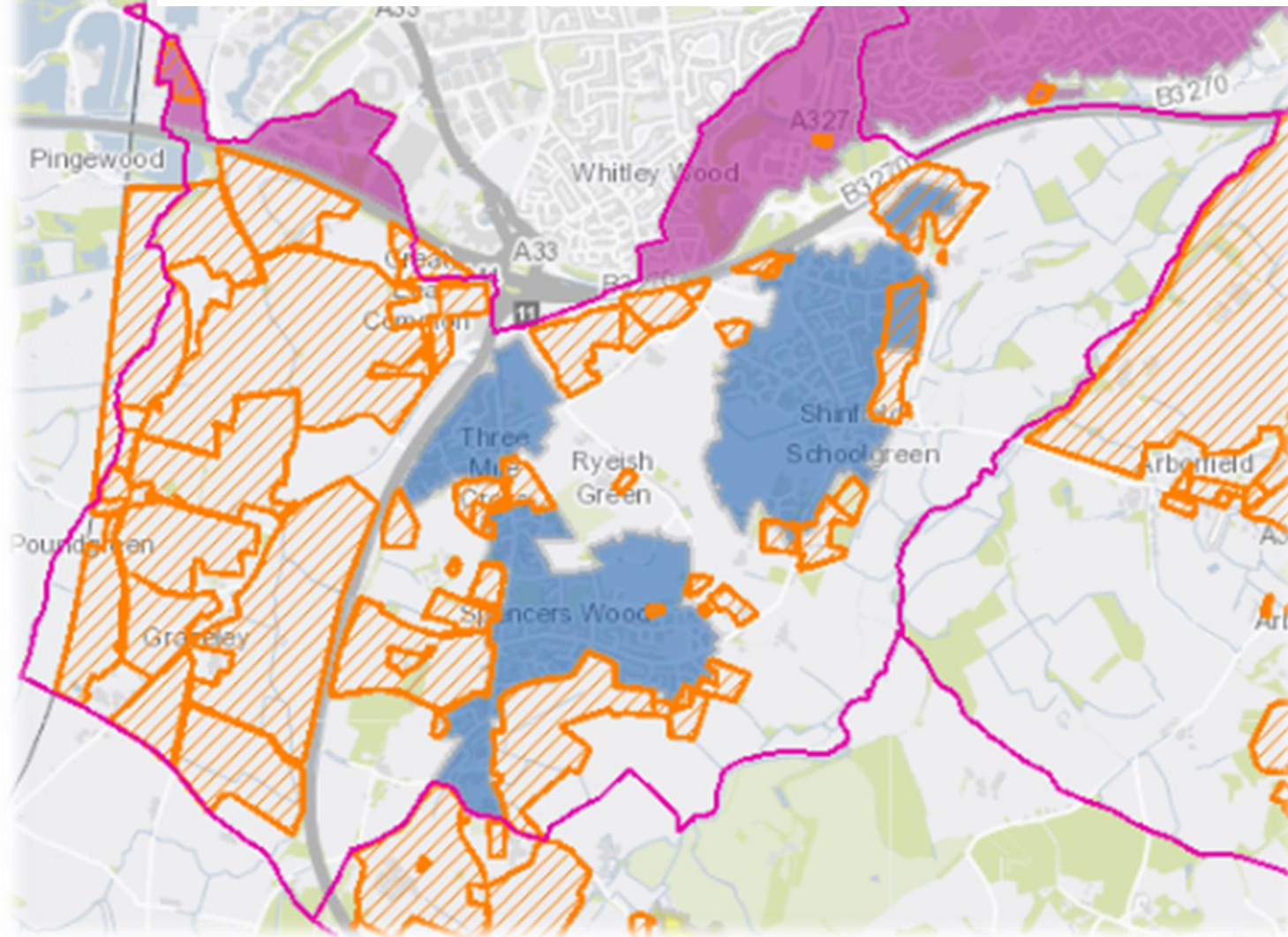
- Commissioned a feasibility study into pedestrian access to Mere oak Park and Ride from Grazeley Rd/Three Mile Cross
 - Did you know Mere oak is served by coaches to Heathrow and Gatwick every hour?
- Promoting extension of Reading Fare Zone to Spencers Wood and School Green
- Supporting the opening of Reading Green Park Station
 - Did you know 50% of the station is in Shinfield Parish/Wokingham?

Improving Shinfield Parish and the South of M4 Strategic Development Location-4

How is this all funded:

- Wokingham Community Infrastructure Levy (CIL) and Section 106 payments
- Shinfield Parish Council CIL receipts and reserves
- Thames Valley Berkshire Local Economic Partnership (LEP)
- Joint funding - Shinfield and Wokingham
- Joint funding - LEP, Wokingham and Reading

Working to manage development up to 2036





- ▶ Chair: Andrew Grimes
- ▶ Vice Chairs: Darrell Lias, Laurie James
- ▶ Chair of Planning Committee: Dawn Peer

- ▶ Contact us at: clerk@shinfieldparish.gov.uk

Come and help Shinfield Parish Council make this a great place to live and work.